



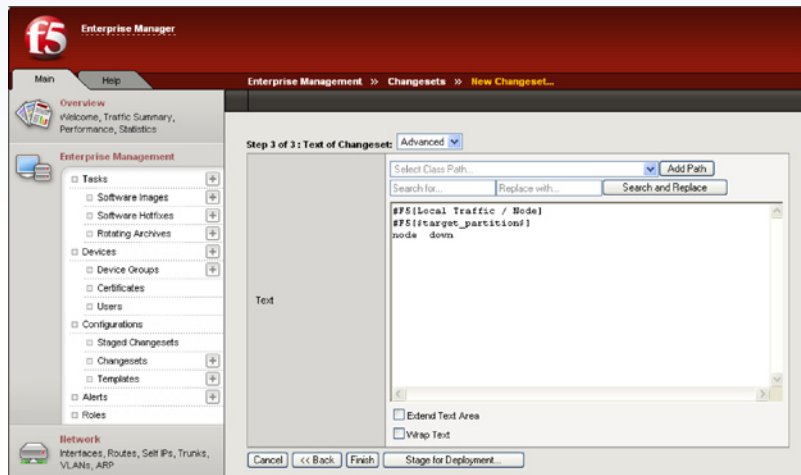
Enterprise Manager

Delivering operational efficiency and centralized management for multiple F5 devices

F5's appliance-based Enterprise Manager gives you the power to centrally discover and maintain the F5 devices in your Application Delivery Network.* Enterprise Manager delivers the following functionality:

Key Benefits:

- Reduce the number of operational errors in managing multiple F5 devices
- Decrease the time to deploy configuration changes across multiple F5 devices
- Lower your labor costs for managing multiple F5 devices



- Automatic backup of device configurations for easy rollbacks or setups
- Workflow management through staged changesets
- Centralized management of SSL certificates and keys
- Distributed Configuration Management through roles defined by specified administrative functions
- Device inventory
- Diff config of two configurations (Compare two configurations)
- Centralized configuration viewing and control

Centralized Software Management

Enterprise Manager allows you to create and stage a set of templates (or changesets) that contain device profiles, configurations settings, iRule definitions, and much more. These changesets are created by simply pointing at an existing device, or you can create your own directly. Once created, you can store or stage multiple changesets. When a new device is ready to join the environment, you can simply push the changeset out and the new box is configured based on your standards without worrying about errors or deviation from your established standards. Enterprise Manager changesets ensure that your customers receive consistent service while you scale your Application Delivery Network infrastructure to handle growth.

Centralized Configuration Storage and Restore

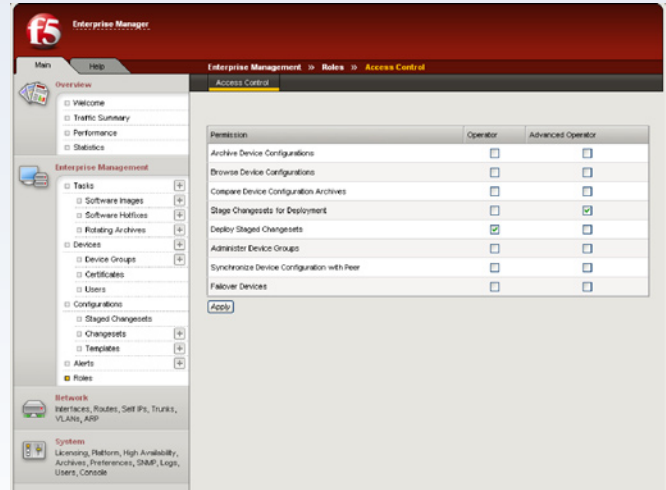
Enterprise Manager can automatically backup valuable configuration files, including license information, on a daily, weekly, or customized schedule. Store multiple configurations per device. Make temporary network changes with the ability to compare the changes and roll-back to the previous configuration. Troubleshoot by trying different network configurations; safely return to previous configurations from the archive at any time. Enterprise Manager provides quick recovery from configuration errors and provides safeguards when reconfiguring devices.

* The Enterprise Manager product supports all F5 TMOS-enabled devices. This allows a user to take advantage of a single interface for key device administration functions, reducing the time needed to manage various devices individually. Today, Enterprise Manager supports the following:

- BIG-IP LTM
- BIG-IP GTM
- Application Security Manager

Device Inventory and Control

Enterprise Manager keeps critical device information in a central location. Easily find platform information, software versions, serial numbers, and registration keys for all of your supported F5 devices. View and select between installed software versions on a device. Receive an alert notification when a device does not respond to a status check. View the status or initiate configuration synchronizations between device pairs. Quickly view specific portion of a device configuration.



Ordering Information

Enterprise Manager 500 (F5-EM-500-RS) is an appliance-based device, shipped on a dedicated enterprise-grade platform, which provides control for up to 50 managed F5 devices.

Enterprise Manager 3000 (F5-EM-3000-RS) is an appliance-based device, shipped on a dedicated enterprise-grade platform, which provides control for up to 300 managed F5 devices.

Distributed Configuration Management

Enterprise Manager can distribute administrative functions across customized roles. Configuration changes can be entered and staged by one set of administrators, while it is deployed by another set. Limited administrative control can be extended to a larger group of administrators that have less familiarity with F5 devices.

Physical Specifications



Enterprise Manager 500

Processor: Single CPU
Memory: 1GB
Gigabit Ethernet CU Ports: 4
Gigabit Fiber Ports (SFP-GBIC Mini): 2 optional
Dimensions: 17.5" w x 21.5" (OAL) / 20.0" behind mounting ears x 1.75" (1U)
Weight: 19 lbs.
Operating Temperature: 41° to 104° F (5° to 40° C) per Telcordia, GR-63-CORE 5.1.1 and 5.1.2

Relative Humidity: 10 to 90% @ 40° C, per Telcordia, GR-63-CORE 5.1.1 and 5.1.2
Safety Agency Approval: UL 60950 (UL1950-3) CSA-C22.2 No. 60950-00 (Bilateral standard with UL 60950) CB TEST CERTIFICATION TO IEC 950 EN 60950
Electromagnetic Emissions Certifications/Susceptibility Standard: EN55022: 1998: +A1: 2000+A2: 2003

EN6100-3-2: 2000 and EN6100-3-3:195+A1: 2000
 FCC part 15B Class A
 EN55024: 1998+A1: 2001+A2: 2003
 EN55024 1998 Class A
 FCC Part 15B Class A
Maximum Power Consumption: 300 W
Maximum Heat Output: 1025 BTUs
Input Voltage: 90-240VAC +/- 10%
 90-132 6A
 80-264 3A



Enterprise Manager 3000

Processor: Dual 3.2GHz Xeon CPUs
Memory: 2GB
Gigabit Ethernet CU Ports: 2
Gigabit Fiber Ports (SFP-GBIC Mini): 0
Dimensions: 16.77w x 21.65" (OAL) x 3.46" (2U)
Weight: 31 lbs.

Operating Temperature: 32° to 104° F (0° to 40° C)
Relative Humidity: 5 to 95% non-condensing
Safety Agency Approval: UL/CUL/CE. RoHS
Electromagnetic Emissions Certifications/Susceptibility Standard: FCC Part 15B ICES 003

EN55022: 1998
 EN55024: 1998
 ANSI C63.4:2003, Class B
 CE Mark
Maximum Power Consumption: 460W
Maximum Heat Output: 1570 BTUs
Input Voltage: 90-264 VAC, +/-10%



F5 Networks, Inc.
 Corporate Headquarters

401 Elliott Avenue West
 Seattle, WA 98119
 (206) 272-5555 Voice
 (888) 88BIGIP Toll-free
 (206) 272-5556 Fax
 www.f5.com
 info@f5.com

F5 Networks
 Asia-Pacific

+65-6533-6103 Voice
 +65-6533-6106 Fax
 info.asia@f5.com

F5 Networks Ltd.
 Europe/Middle-East/Africa

+44 (0) 1932 582 000 Voice
 +44 (0) 1932 582 001 Fax
 emeainfo@f5.com

F5 Networks
 Japan K.K.

+81-3-5114-3200 Voice
 +81-3-5114-3201 Fax
 info@f5networks.co.jp